

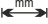

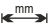

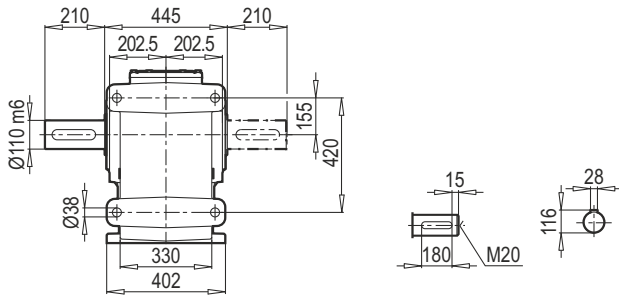
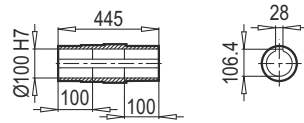
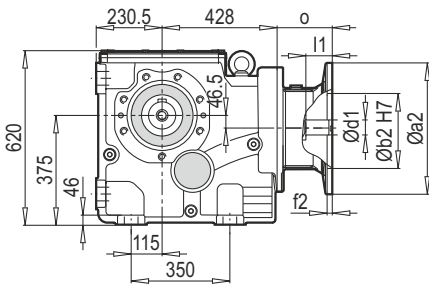


| Typ / Type / Tipo / Type / Tipo | iges | 4-pol. 50Hz 1400rpm n ₂ [min ⁻¹] | M _{amax} f _B =1 4 - pol. [Nm] | P _{1max} W f _B ≥ 1 | | | | PAM - IEC | | | | | | | |
|---------------------------------------|---|--|--|--|-------------|--------------|--------------|--|-----|-----|-----|-----|-----|--|--|
| | | | | 4 - pol. 1400rpm [kW] | FR1 [kN] | FR2A [kN] | FR2B [kN] | f _B ⇒  45 - 86 | | | | | | | |
| K100390 | 152.74 | 9.2 | 13000 | 13.86 | 10.0 | 80.0 | 65.0 | 160 | 180 | | | | | | |
| | 136.95 | 10.2 | 13000 | 15.46 | 9.9 | 80.0 | 65.0 | 160 | 180 | | | | | | |
| | 124.56 | 11.2 | 13000 | 17.00 | 9.9 | 80.0 | 65.0 | 160 | 180 | | | | | | |
| |  112.66 | 12.4 | 13000 | 18.80 | 9.8 | 80.0 | 65.0 | 160 | 180 | | | | | | |
| |  102.47 | 13.7 | 13000 | 20.66 | 9.8 | 80.0 | 65.0 | 160 | 180 | 200 | | | | | |
| |  94.85 | 14.8 | 13000 | 22.32 | 9.7 | 80.0 | 65.0 | 160 | 180 | 200 | | | | | |
| | + | 86.27 | 16.2 | 13000 | 24.55 | 9.7 | 80.0 | 65.0 | 160 | 180 | 200 | | | | |
| | PAM - IEC | 75.56 | 18.5 | 13000 | 28.02 | 9.6 | 80.0 | 65.0 | 160 | 180 | 200 | | | | |
| |  68.72 | 20.4 | 13000 | 30.81 | 9.5 | 80.0 | 65.0 | 160 | 180 | 200 | 225 | | | | |
| |  58.01 | 24.1 | 13000 | 36.50 | 9.4 | 80.0 | 65.0 | 160 | 180 | 200 | 225 | 250 | | | |
| | 52.76 | 26.5 | 13000 | 40.13 | 9.3 | 80.0 | 65.0 | 160 | 180 | 200 | 225 | 250 | | | |
| | 50.31 | 27.8 | 13000 | 42.09 | 9.2 | 80.0 | 65.0 | 160 | 180 | 200 | 225 | 250 | | | |
| | 44.36 | 31.6 | 12000 | 44.06 | 9.2 | 78.2 | 65.0 | 160 | 180 | 200 | 225 | 250 | | | |
| | 40.07 | 34.9 | 12700 | 51.63 | 9.0 | 73.6 | 65.0 | 160 | 180 | 200 | 225 | 250 | | | |
| | 36.96 | 37.9 | 12300 | 54.21 | 8.9 | 71.9 | 65.0 | 160 | 180 | 200 | 225 | 250 | | | |
| | 33.62 | 41.6 | 11900 | 57.65 | 8.8 | 69.8 | 65.0 | 160 | 180 | 200 | 225 | 250 | | | |
| | 30.33 | 46.2 | 11500 | 61.76 | 8.7 | 67.5 | 65.0 | 160 | 180 | 200 | 225 | 250 | 280 | | |
| | 28.27 | 49.5 | 10200 | 58.77 | 8.8 | 67.7 | 65.0 | 160 | 180 | 200 | 225 | 250 | | | |
| | 26.01 | 53.8 | 11100 | 69.51 | 8.5 | 63.9 | 63.9 | 160 | 180 | 200 | 225 | 250 | 280 | | |
| | 23.66 | 59.2 | 10500 | 72.29 | 8.5 | 62.4 | 62.4 | 160 | 180 | 200 | 225 | 250 | 280 | | |
| | 21.43 | 65.3 | 10400 | 79.05 | 8.3 | 60.0 | 60.0 | 160 | 180 | 200 | 225 | 250 | 280 | | |
| | 19.61 | 71.4 | 10700 | 88.88 | 8.0 | 57.1 | 57.1 | 160 | 180 | 200 | 225 | 250 | | | |
| | 17.69 | 79.2 | 10400 | 95.76 | 7.9 | 55.1 | 55.1 | 160 | 180 | 200 | 225 | 250 | 280 | | |
| | 16.09 | 87.0 | 9900 | 100.22 | 7.8 | 53.7 | 53.7 | | 180 | 200 | 225 | 250 | 280 | | |
| | 15.22 | 92.0 | 10000 | 107.02 | 7.6 | 52.3 | 52.3 | | 180 | 200 | 225 | 250 | 280 | | |
| | 13.80 | 101.5 | 9600 | 113.31 | 7.4 | 50.8 | 50.8 | | 180 | 200 | 225 | 250 | 280 | | |
| | 12.55 | 111.6 | 8800 | 114.21 | 7.4 | 50.1 | 50.1 | | 180 | 200 | 225 | 250 | 280 | | |
| | 11.64 | 120.3 | 7700 | 107.75 | 7.6 | 50.4 | 50.4 | | 180 | 200 | 225 | 250 | 280 | | |
| | 10.34 | 135.4 | 7900 | 124.45 | 7.1 | 47.6 | 47.6 | | 180 | 200 | 225 | 250 | 280 | | |
| | 8.69 | 161.0 | 6800 | 127.46 | 7.1 | 46.1 | 46.1 | | 180 | 200 | 225 | 250 | 280 | | |

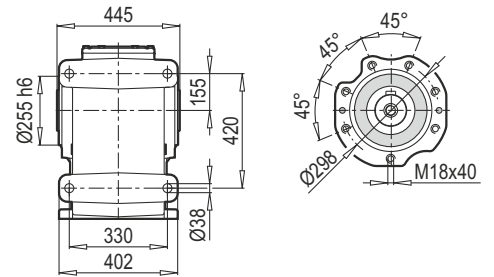
TMA - ÇMA / B14



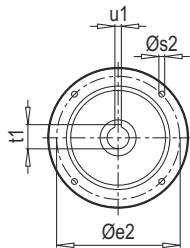
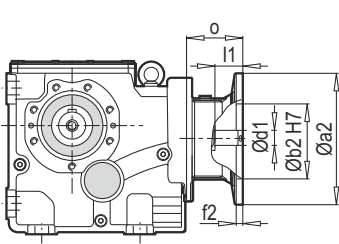
K 100390 PAM B5/B14



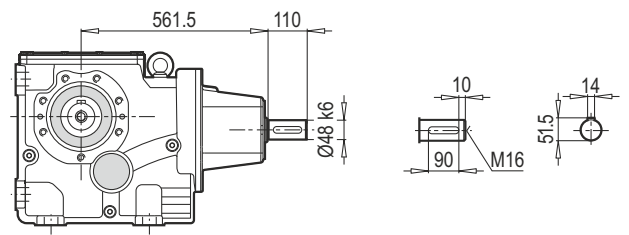
DA / B14



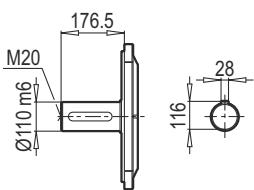
K 100390 PAM B5/B14



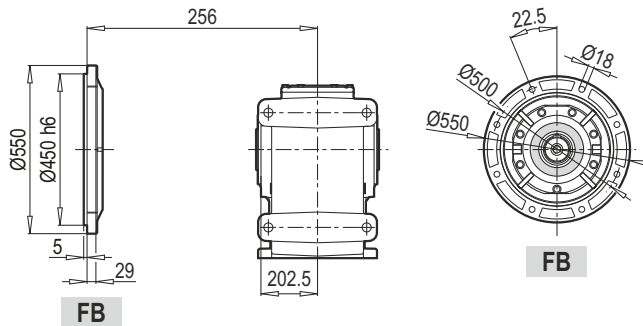
K 100390 W



TMA / B5



DA / B5



| W ~ Kg | |
|----------|-----|
| K 100390 | 460 |

| Typ / Type / Tipo Type / Tipo | ~ Kg | | | | | | | | | | |
|-------------------------------------|--------|-----|-----|-----|----|-----|-----|-----|------|----|-----|
| | PAM B5 | Øa2 | Øb2 | Øe2 | f2 | Øs2 | Ød1 | l1 | t1 | u1 | o |
| K 100390 | 160 | 350 | 250 | 300 | 7 | 16 | 42 | 112 | 45.3 | 12 | 109 |
| | 180 | 350 | 250 | 300 | 7 | 16 | 48 | 112 | 51.8 | 14 | 109 |
| | 200 | 400 | 300 | 350 | 7 | 16 | 55 | 112 | 59.3 | 16 | 146 |
| | 225 | 450 | 350 | 400 | 7 | 16 | 60 | 142 | 64.4 | 18 | 146 |
| | 250 | 550 | 450 | 500 | 7 | 16 | 65 | 142 | 69.4 | 18 | 175 |
| | 280 | 550 | 450 | 500 | 7 | 16 | 75 | 142 | 79.9 | 20 | 175 |

| ~ Kg | |
|--------|----------|
| PAM B5 | K 100390 |
| 160 | 390 |
| 180 | 390 |
| 200 | 455 |
| 225 | 461 |
| 250 | 480 |
| 280 | 480 |